

SCHEDA TECNICA
TURBO JET Nylon hammer-in plug

EN
rev. 07/2014
p. 1/3

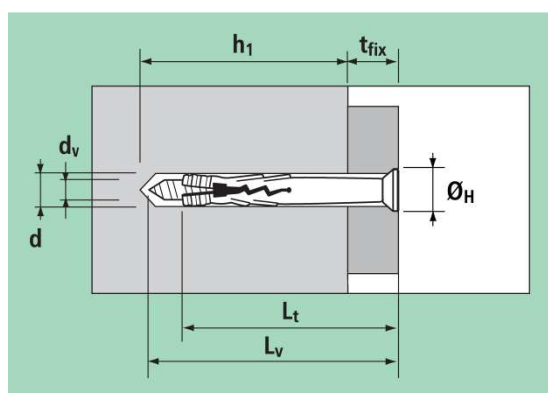
Hammer-in plug with pre-assembled countersunk flat-head screw, POZI drive.
Available with countersunk, flat and rounded collar.



Base material

specific use

concrete
stone
solid brick



d_0 = plug diameter = hole diameter
 L_t = plug length
 h_1 = minimum hole depth
 h_{nom} = overall embedment depth
 h_{ef} = effective anchorage depth
 t_{fix} = fixable thickness
 d_v = screw diameter
 L_v = screw length
 \varnothing_H = head diameter

$h_{nom} = h_{ef}$

TURBO JET Nylon grey

with countersunk collar and countersunk nail-screw, white-zinc plated



art.	descr.	d_0 mm	L_t mm	h_1 mm	h_{nom} mm	d_v mm	L_v mm	screw POZI n.	\varnothing_H mm	t_{fix} mm
93025	TJ5-27SV	5	27	25	22	3,5	32	2	9,1	5
93026	TJ5-37SV		37				42			15
93027	TJ5-47SV		47				52			25
93028	TJ6-32SV	6	32	30	27	3,8	37	2	10,0	5
93029	TJ6-40SV		40				45			10
93030	TJ6-55SV		55				60			25
93031	TJ6-67SV		67				72			37
93032	TJ6-80SV		80				85			50
93033	TJ8-45SV	8	45	40	35	4,8	50	3	12,2	10
93034	TJ8-60SV		60				65			25
93035	TJ8-75SV		75				80			40
93036	TJ8-100SV		100				105			65
93037	TJ8-120SV		120				125			85
93038	TJ8-135SV		135				140			100

SCHEDA TECNICA
TURBO JET Nylon hammer-in plug

EN
rev. 07/2014
p. 2/3

TURBO JET Nylon gray
with flat collar and countersunk nail-screw, white-zinc plated



art.	descr.	d ₀ mm	L _t mm	h ₁ mm	h _{nom} mm	d _v mm	L _v mm	screw POZI n.	Ø _H mm	t _{fix} mm
93011	TJ5-27V	5	27	25	22	3,5	32	2	8,9	5
93012	TJ5-37V		37				42			15
93013	TJ5-47V		47				52			25
93014	TJ6-32V	6	32	30	27	3,8	37	2	10,8	5
93015	TJ6-40V		40				45			10
93016	TJ6-55V		55				60			25
93017	TJ6-67V		67				72			37
93018	TJ6-80V		80				85			50
93019	TJ8-45V	8	45	40	35	4,8	50	3	12,8	10
93020	TJ8-60V		60				65			25
93021	TJ8-75V		75				80			40
93022	TJ8-100V		100				105			65
93023	TJ8-120V		120				125			85
93024	TJ8-135V		135				140			100

TURBO JET Nylon gray
with rounded collar and countersunk nail-screw, white-zinc plated



art.	descr.	d ₀ mm	L _t mm	h ₁ mm	h _{nom} mm	d _v mm	L _v mm	screw POZI n.	Ø _H mm	t _{fix} mm
93001	TJ5-27B	5	27	25	22	3,5	32	2	10,9	5
93002	TJ5-37B		37				42			15
93003	TJ6-32B	6	32	30	27	3,8	37	2	13,9	5
93004	TJ6-40B		40				45			10
93005	TJ6-55B		55				60			25
93006	TJ8-45B	8	45	40	35	4,8	50	3	15,5	10
93007	TJ8-60B		60				60			25

TURBO JET Nylon dark brown
with rounded collar and countersunk nail-screw, black finish



art.	descr.	d ₀ mm	L _t mm	h ₁ mm	h _{nom} mm	d _v mm	L _v mm	screw POZI n.	Ø _H mm	t _{fix} mm
93008	TJ6-36BM	6	32	30	27	3,8	40	2	13,9	5
93009	TJ6-40BM		40				50			10
93010	TJ6-55BM		55				60			25

TURBO JET Nylon dark brown
with rounded collar and countersunk nail-screw, copper



art.	descr.	d ₀ mm	L _t mm	h ₁ mm	h _{nom} mm	d _v mm	L _v mm	screw POZI n.	Ø _H mm	t _{fix} mm
93039	TJ6-32BR	6	32	30	27	3,8	40	2	13,9	5
93040	TJ6-40BR		40				50			10
93041	TJ6-55BR		55				60			25

SCHEDA TECNICA
TURBO JET Nylon hammer-in plug

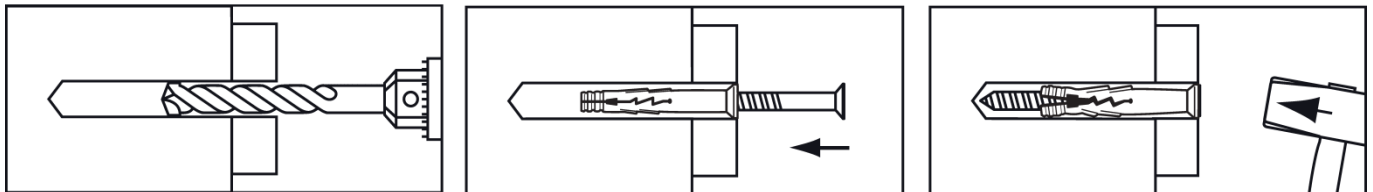
EN
rev. 07/2014
p. 3/3

TURBO JET Nylon gray
with rounded collar and nail-screw with M6 thread



art.	descr.	d ₀ mm	L _t mm	h ₁ mm	h _{nom} mm	d _v mm	L _v mm	screw M6 mm	Ø _H mm	t _{fix} mm
93092	TJ6-40VF	6	40	30	27	4	45	4	13,9	5

Installation



Materials

part	material	coating
plug	polyamide (Nylon) grey RAL 7035 or dark brown RAL 8017	-
nail-screw	steel	zincatura ≥ 5 µm ISO 4042

Strength data

on concrete class C20/25, expressed in daN (1 daN ≈ 1 kg)

Characteristic resistance

size		Turbo Ø 5 mm	Turbo Ø 6 mm	Turbo Ø 8 mm
tension	N _{Rk}	90	150	210

Appropriate safety factor is recommended (4 ÷ 5).

Characteristic resistances derive from tests conducted in G&B Fissaggi's laboratories according to international guidelines. Load values are valid only if installation is performed accurately. Designer is responsible for the choice of size and number of anchors.

Recommended load

size		Turbo Ø 5 mm	Turbo Ø 6 mm	Turbo Ø 8 mm
tension	N _{Rk}	16	27	38

Recommended loads include the above mentioned partial safety factor of 4 and the further safety factor 1.4.